



MONTHLY MEMBERSHIP PROGRESS REPORT

District 26 M3

Results as of: 12/31/2017

GMT: JOE AL PICONE

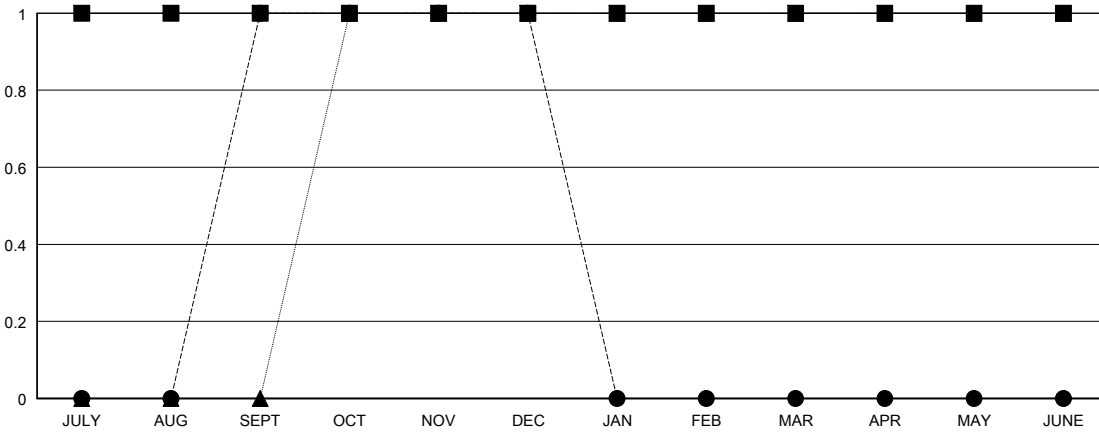
LOCATION MISSOURI

GMT CA

Clubs			
RESULTS FOR 2017-2018			
QUARTER	NEW CLUB GOAL	NEW CLUBS	DROPPED CLUBS
JULY/AUG/SEPT	1	1	0
OCT/NOV/DEC	0	0	0
JAN/FEB/MAR	0	0	0
APR/MAY/JUNE	0	0	0

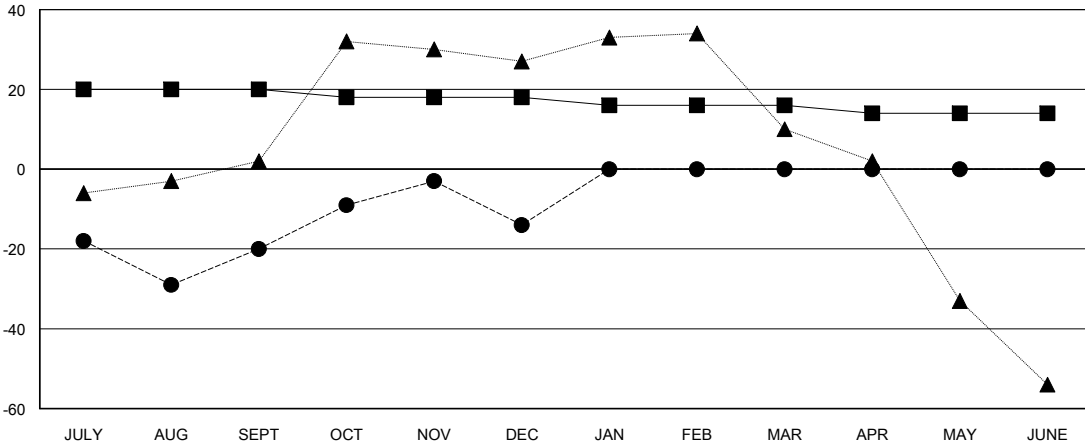
Members			
RESULTS FOR 2017-2018			
QUARTER	MEMBER GROWTH NET GOAL	MEMBER GROWTH ACTUAL	DROPPED MEMBERS ACTUAL (including transfers)
JULY/AUG/SEPT	20	31	49
OCT/NOV/DEC	-2	29	20
JAN/FEB/MAR	-2	0	0
APR/MAY/JUNE	-2	0	0

GOALS AND ACTUAL NEW CLUBS CUMULATIVE



- - CURRENT YEAR GOALS FOR NEW CLUBS
- - CURRENT YEAR ACTUAL NEW CLUBS
- ▲ - LAST YEAR ACTUAL NEW CLUBS

GOALS AND ACTUAL MEMBERS CUMULATIVE



- - MEMBER GROWTH NET GOAL
- - MEMBER GROWTH ACTUAL
- ▲ - LAST YEAR MEMBERSHIP ACTUAL

DROPPED CLUBS: 0	14 CLUBS OF 59 ADDED 1 OR MORE NEW MEMBERS	<u>GENDER DISTRIBUTION</u>
DROPPED MEMBERS	CLICK HERE FOR CUMULATIVE MEMBERSHIP DATA	MALE 1,020 (76.52%)
		FEMALE 313 (23.48%)
DECEASED 5		Women Percentage Fiscal Year Goal: 23%
CLUB CANCELLED 0		TOTAL FAMILY UNIT MEMBERS 138
OTHER 64		FAMILY MEMBERS PAYING HALF DUES 71
TOTAL 69		